

Staying relevant:

**Changing unions in challenging
times**

Mobilisation power

De-professionalisation

Young educators

Digitalisation

Privatisation

Participation

External conditionalities

Work-intensification

Collective bargaining

Ageing workforce and membership

Trade union rights

Coalitions & alliances

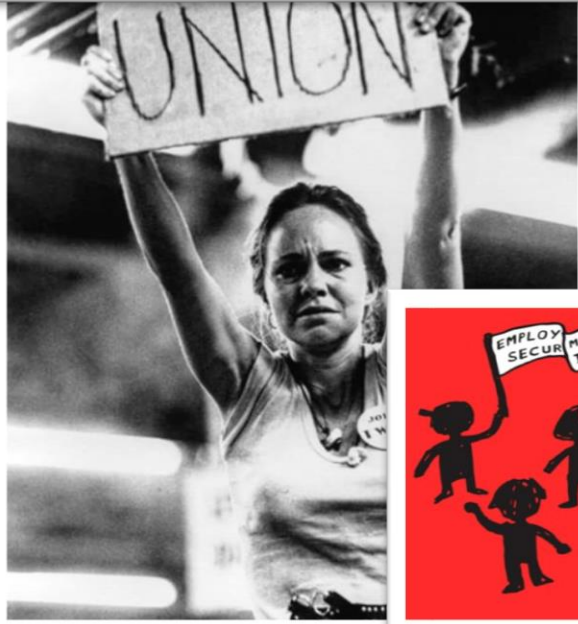
...

Is the direction of changes going towards achieving social justice?

SAVE OUR
PUBLIC
SCHOOLS



ENOUGH OF
THEIR CRISIS
**BACK TO
OUR FUTURE**

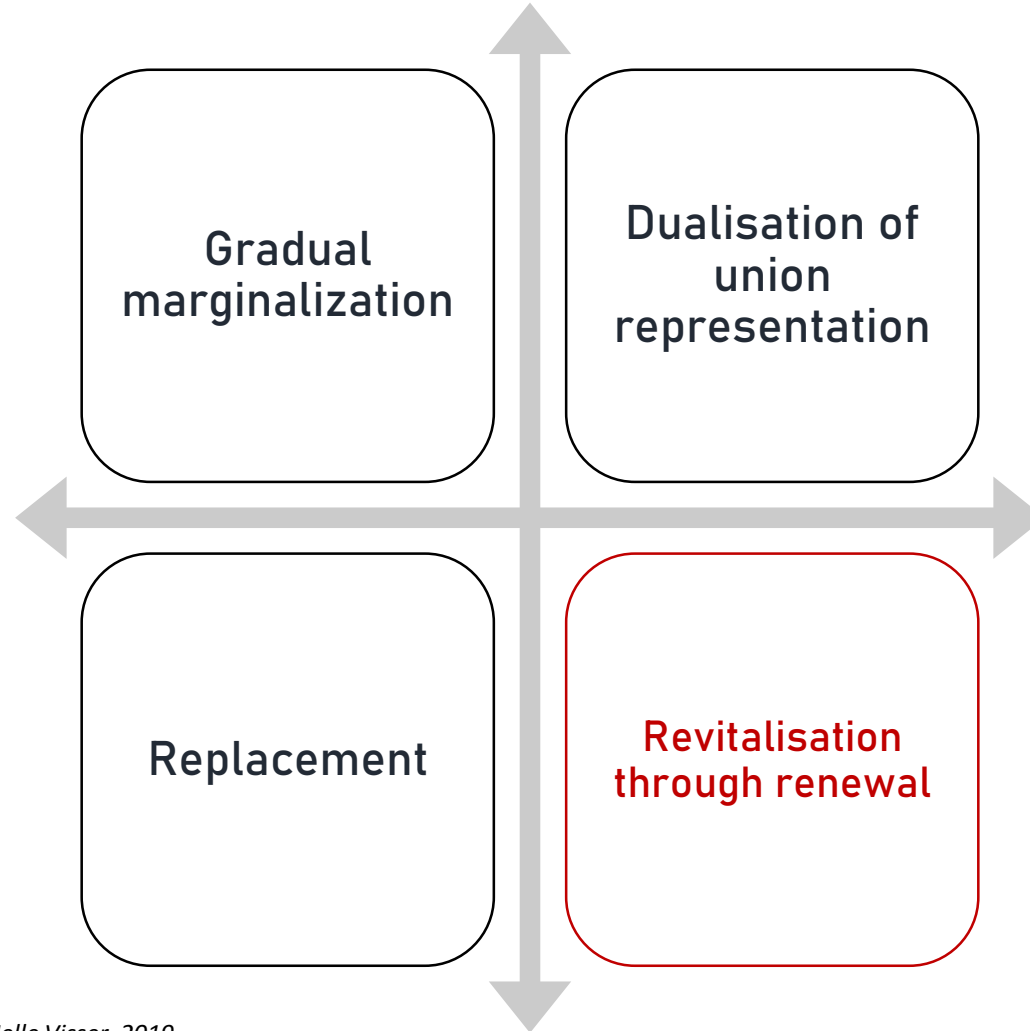




Signs of possible decline

- General decline in union affiliation
- Decreasing membership involvement in union structures and participation
- Increasing divide between educators with stable contracts and precarious
- Shrinking activists base
- ...

How would the future look like?



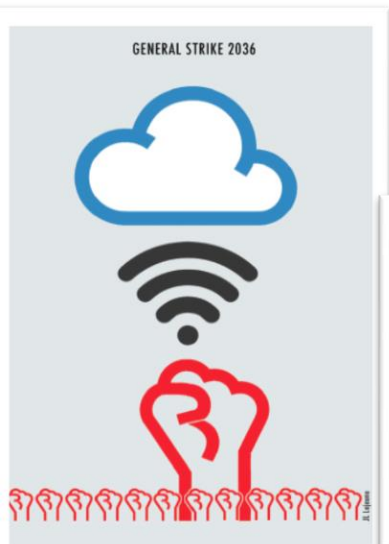


Work together across borders...

- Learning from each other's stories
- Coordinate campaigns around core values
- Pool resources
- Develop our networks
- ...

Staying relevant: trade union renewal

- ❑ Challenges
- ❑ Increasing members' involvement and participation in the union
- ❑ Mobilising members beyond the workplace & around campaigns



ere stickin'
with the

UNION

